

The End of Day and Beginning of the World

Shingo Yoshida realized this project at the Russian Far East, namely the Siberian regions of Chukotka and Beringia, where the 180th meridian runs vertically setting the basis for the international date line, which separates two consecutive calendar days. Local raven folk stories served as source of his inspiration.

Production Cooperation with:

Ida Ruchina, Director of the Red Cross Chukotka, Russia

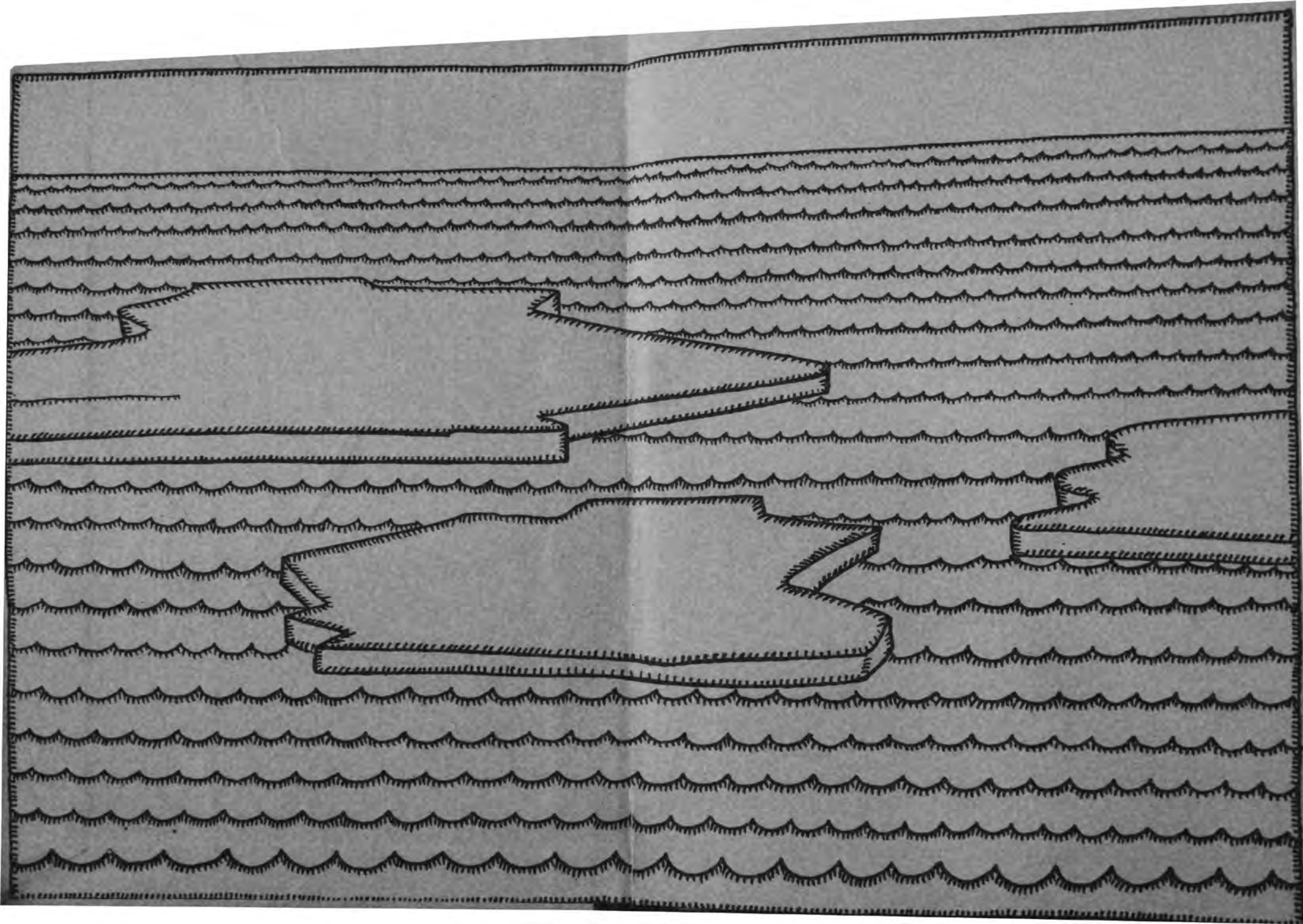
Sonia Pastor

Beringia National Park, Russia



































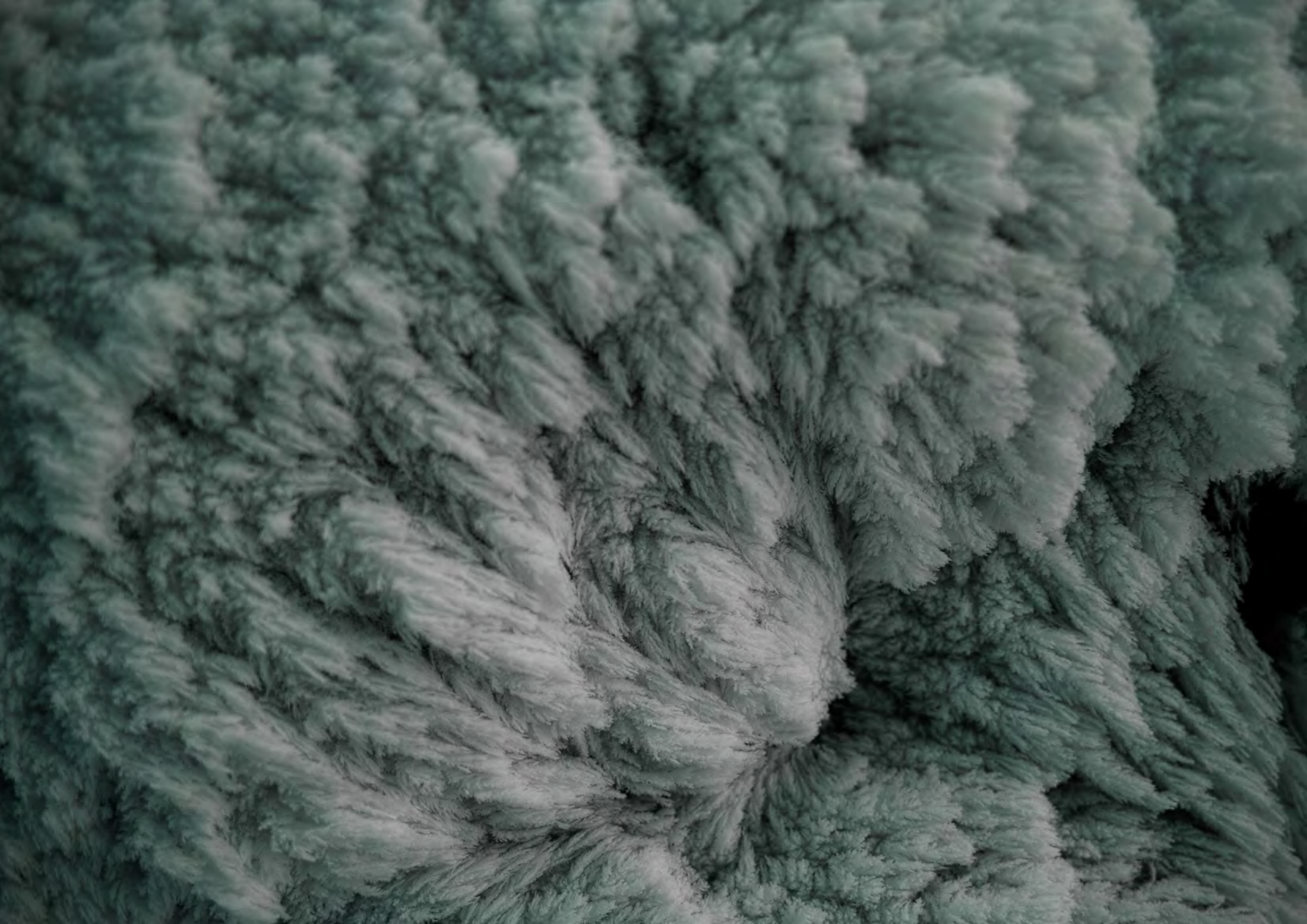




























4496
YT 87

ИЗМЕНА ПОСЛЕД

2245
YT 87























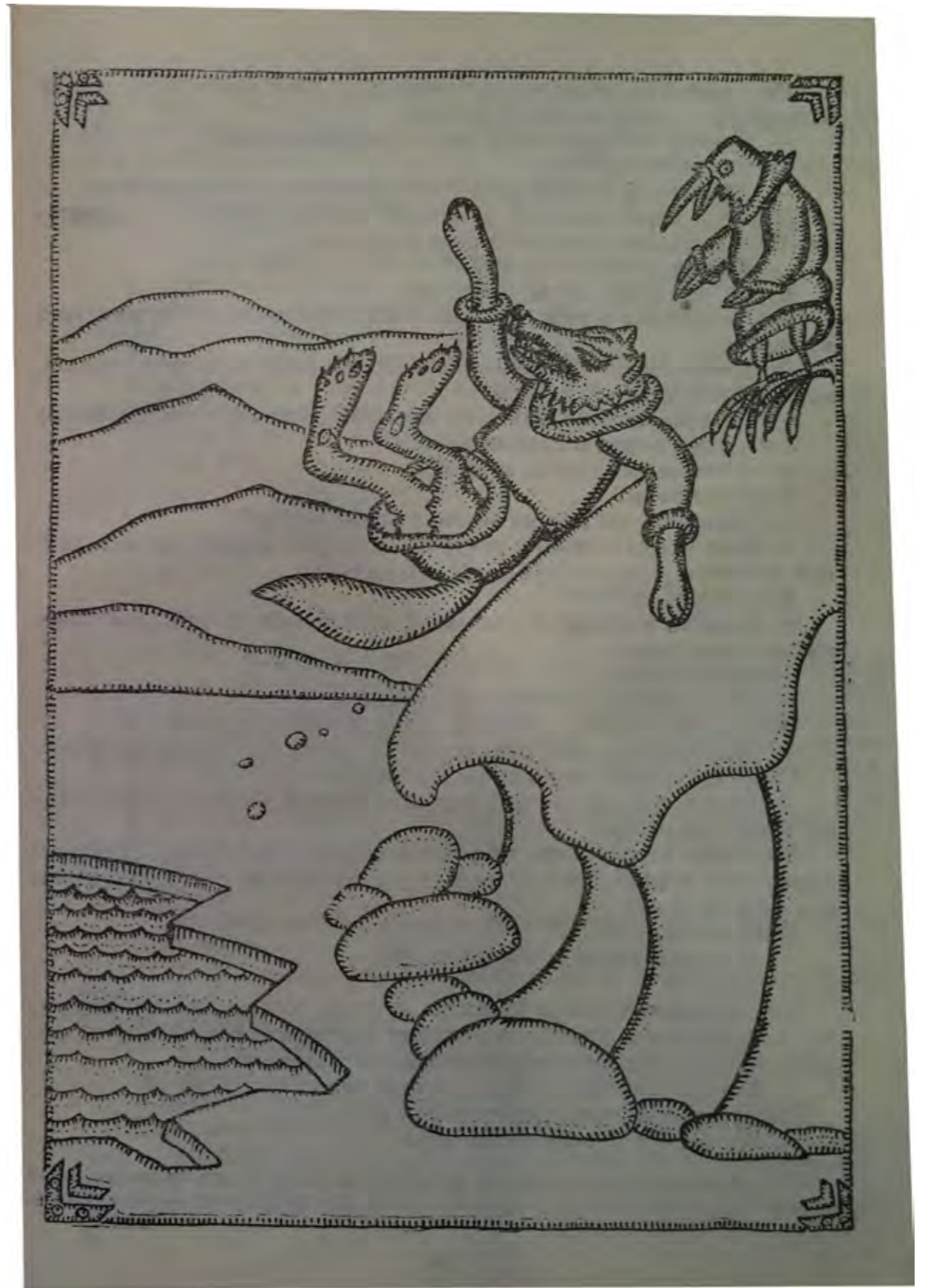










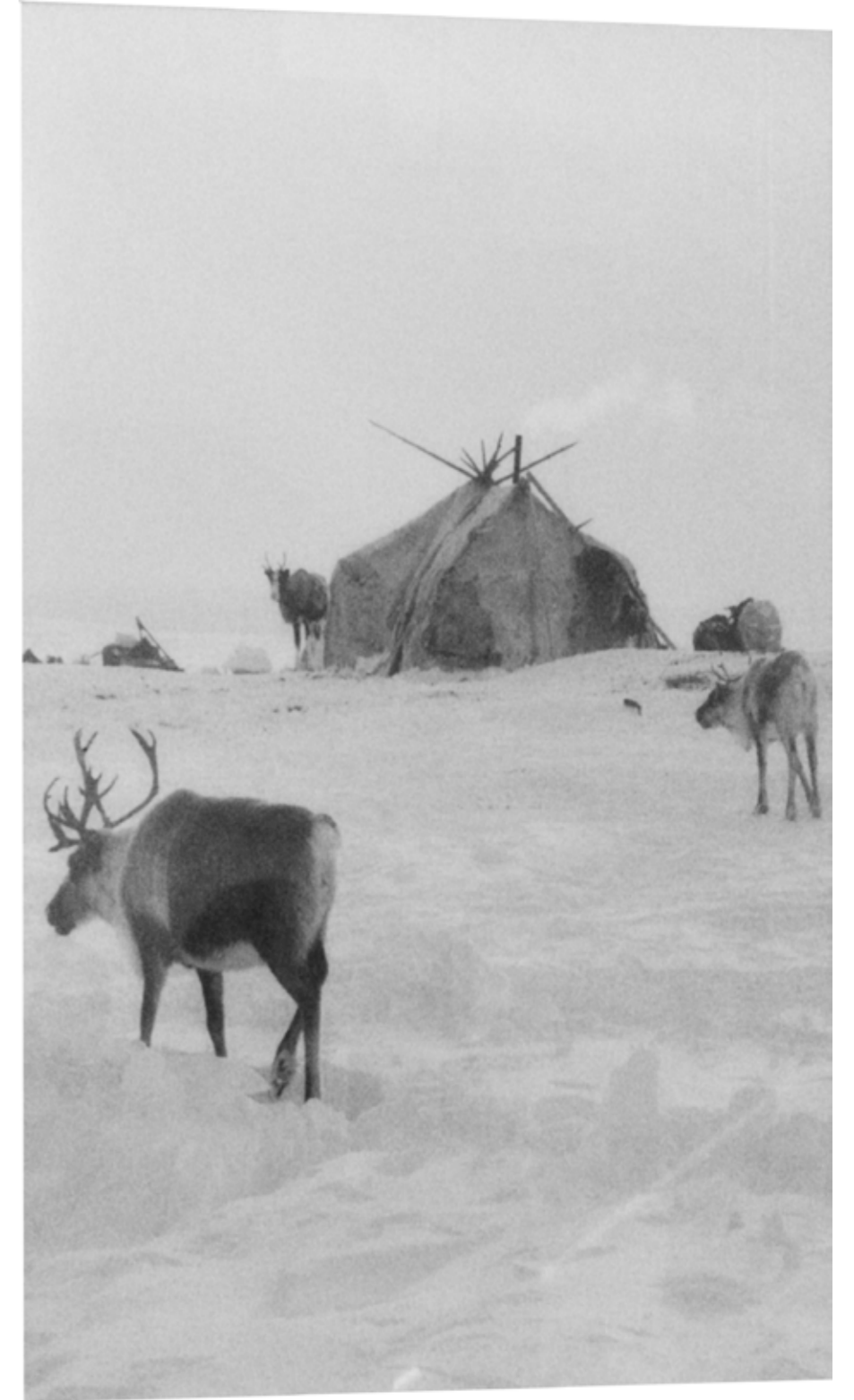
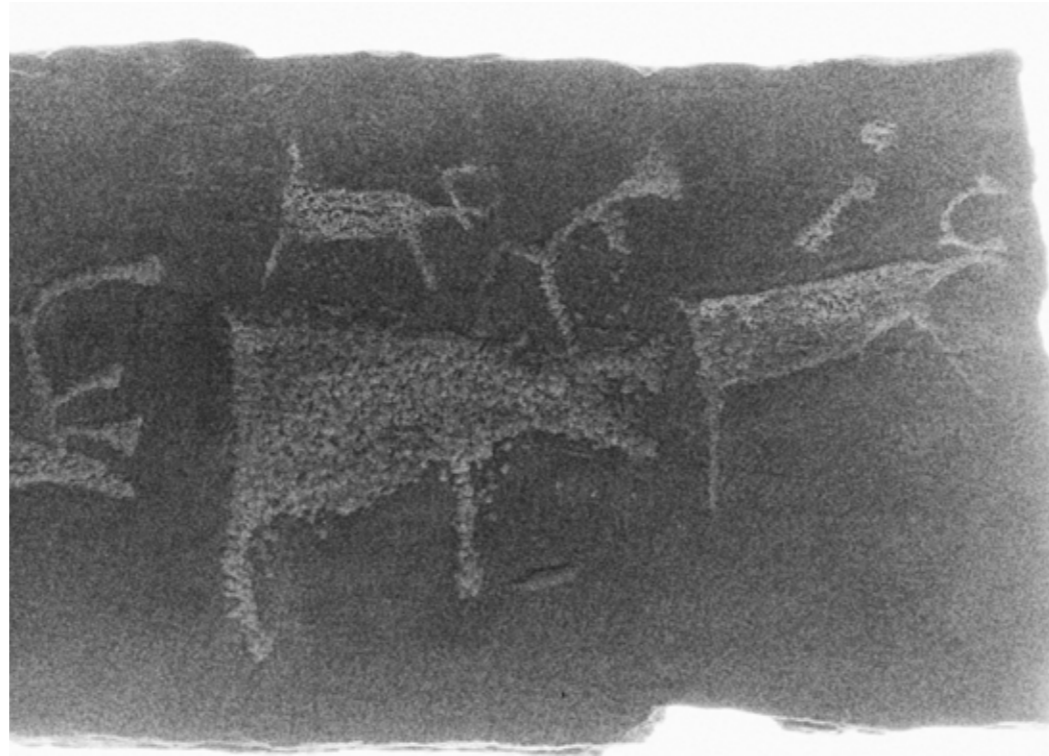


















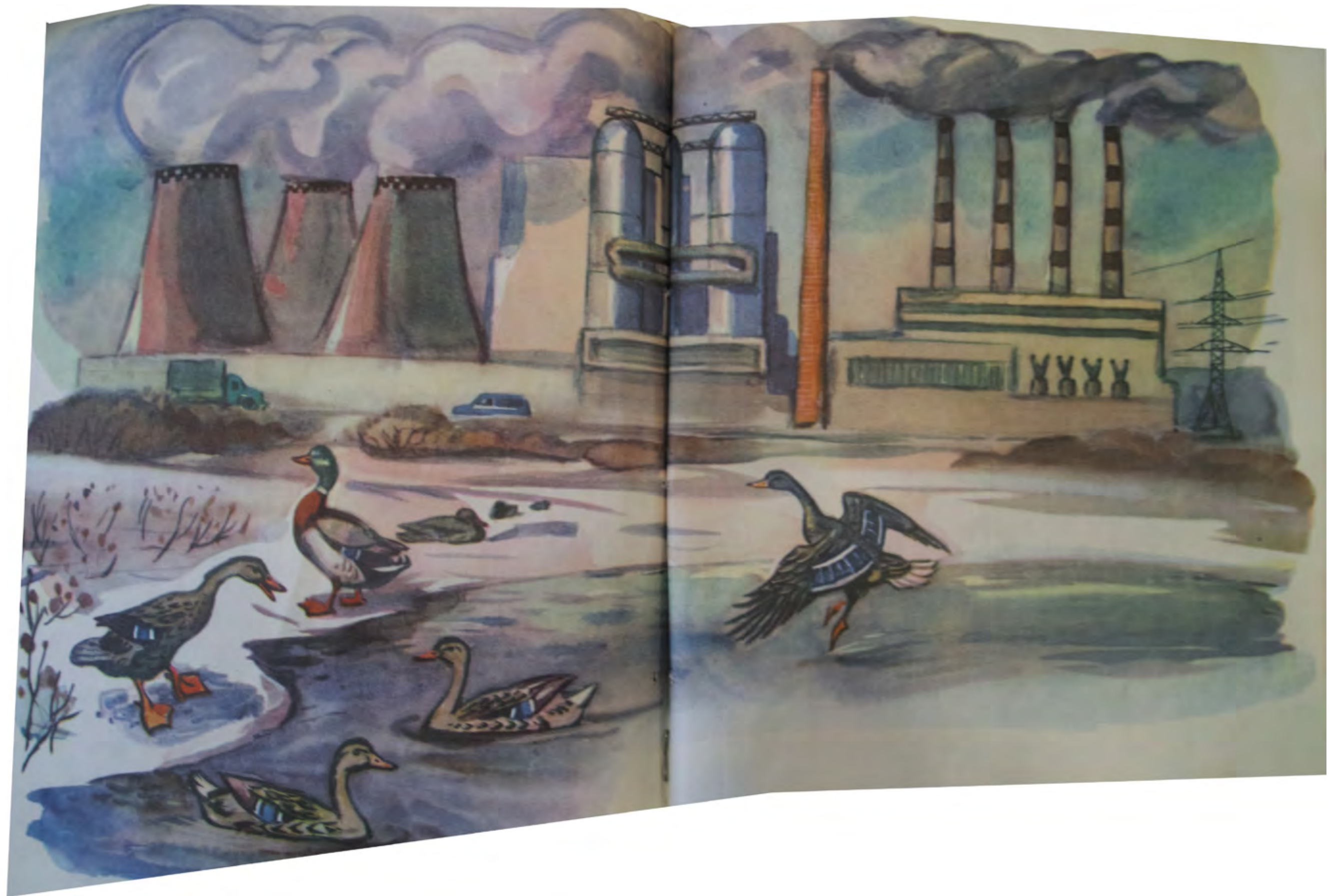


















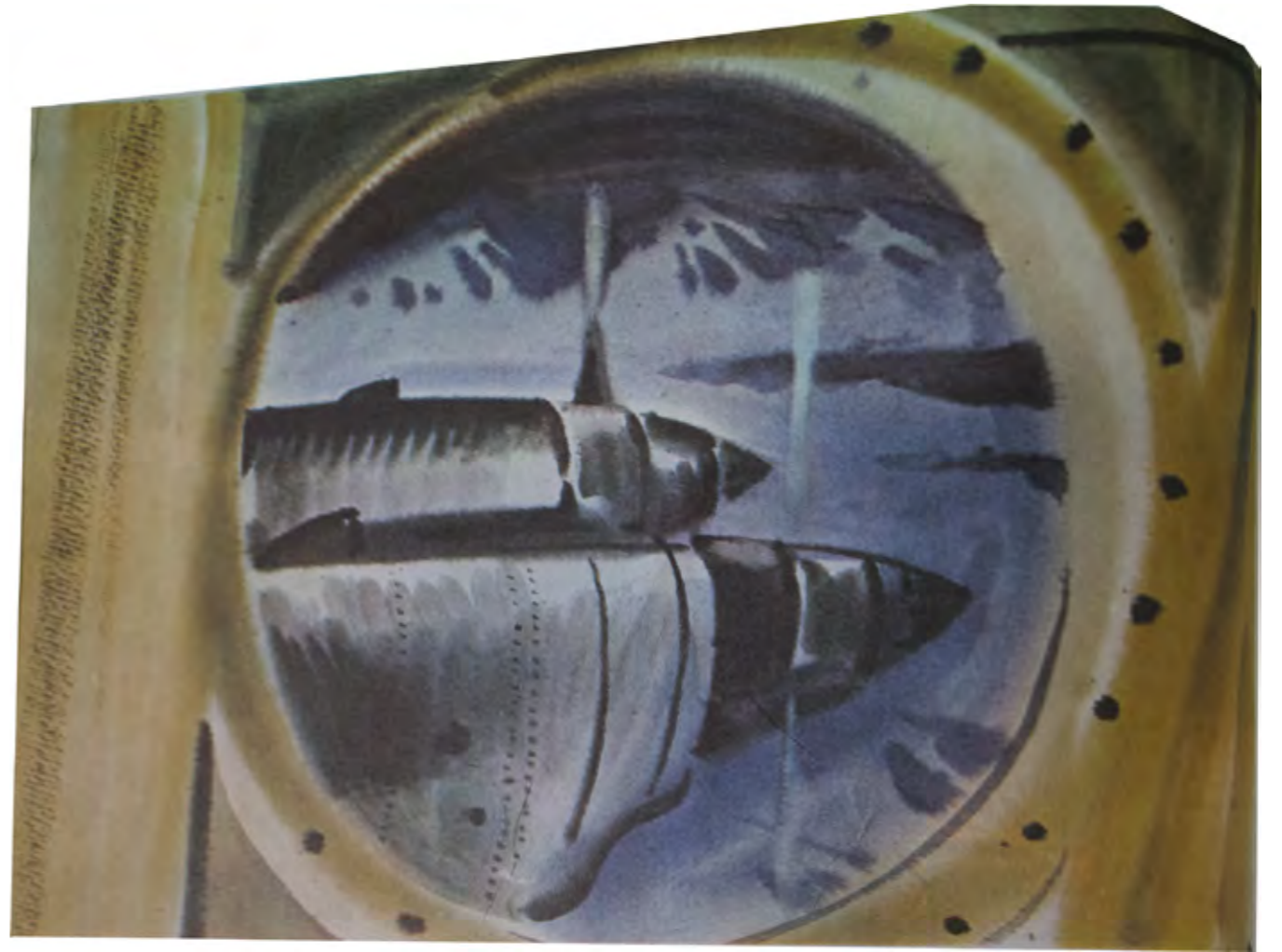


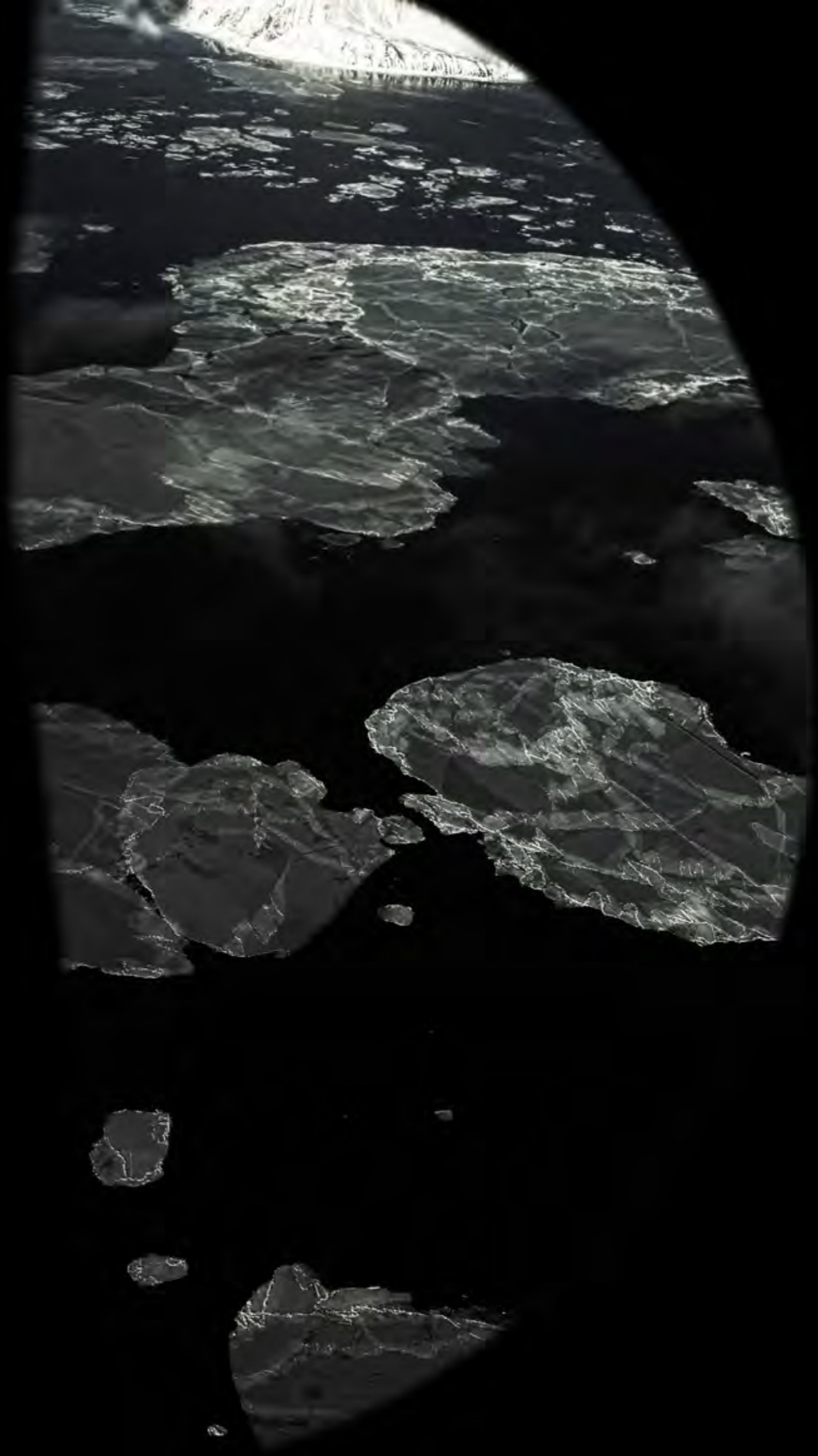








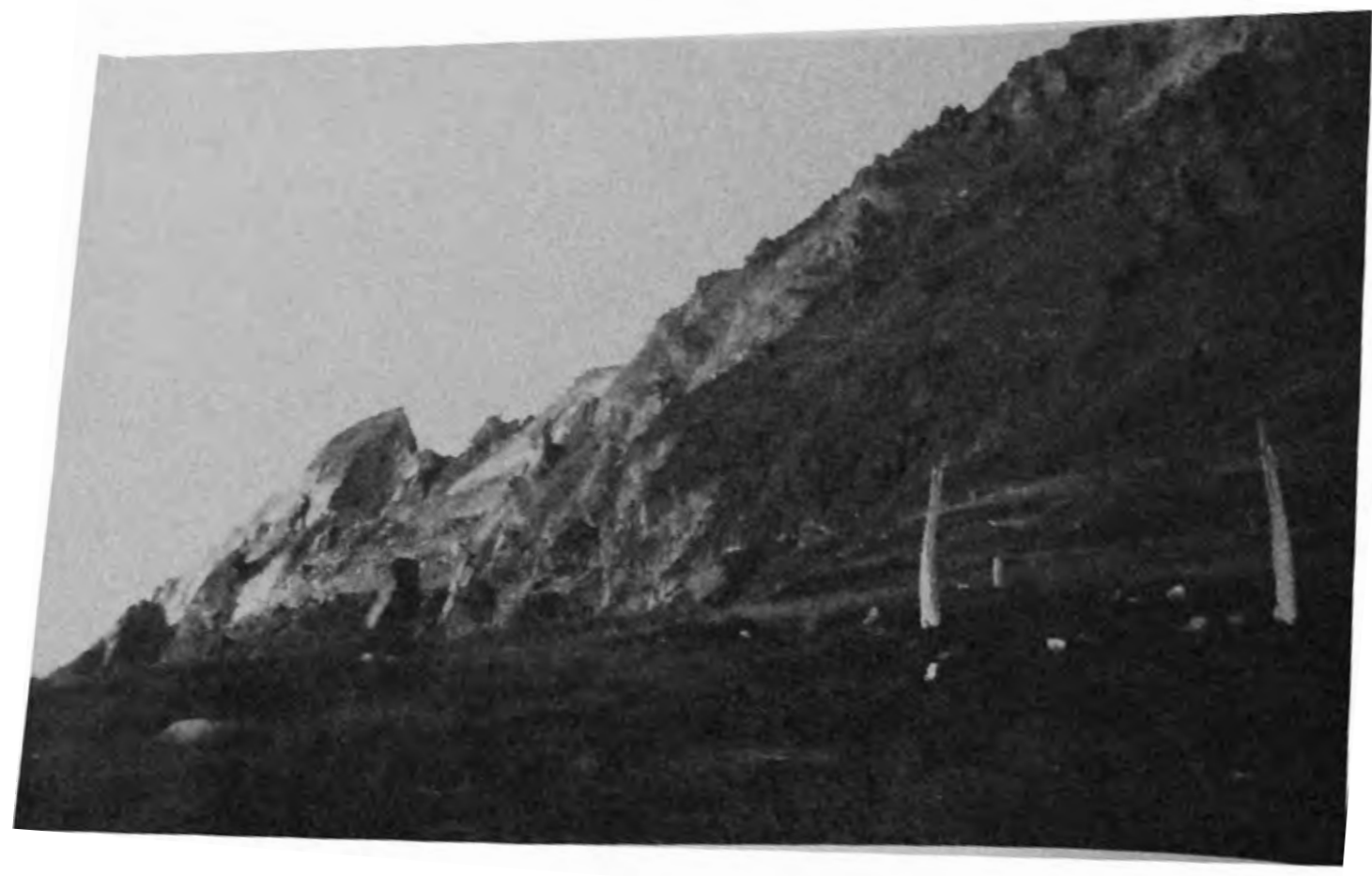


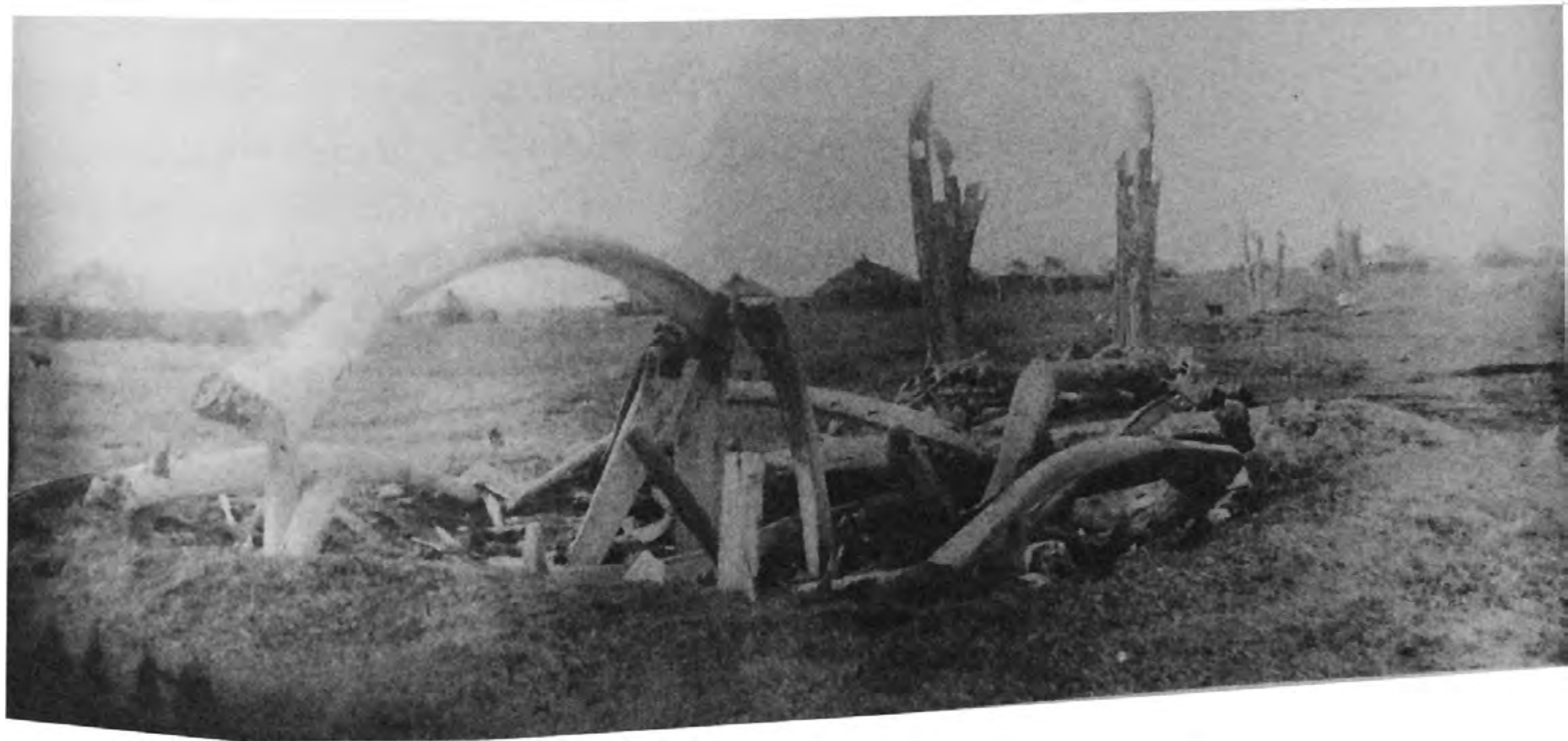


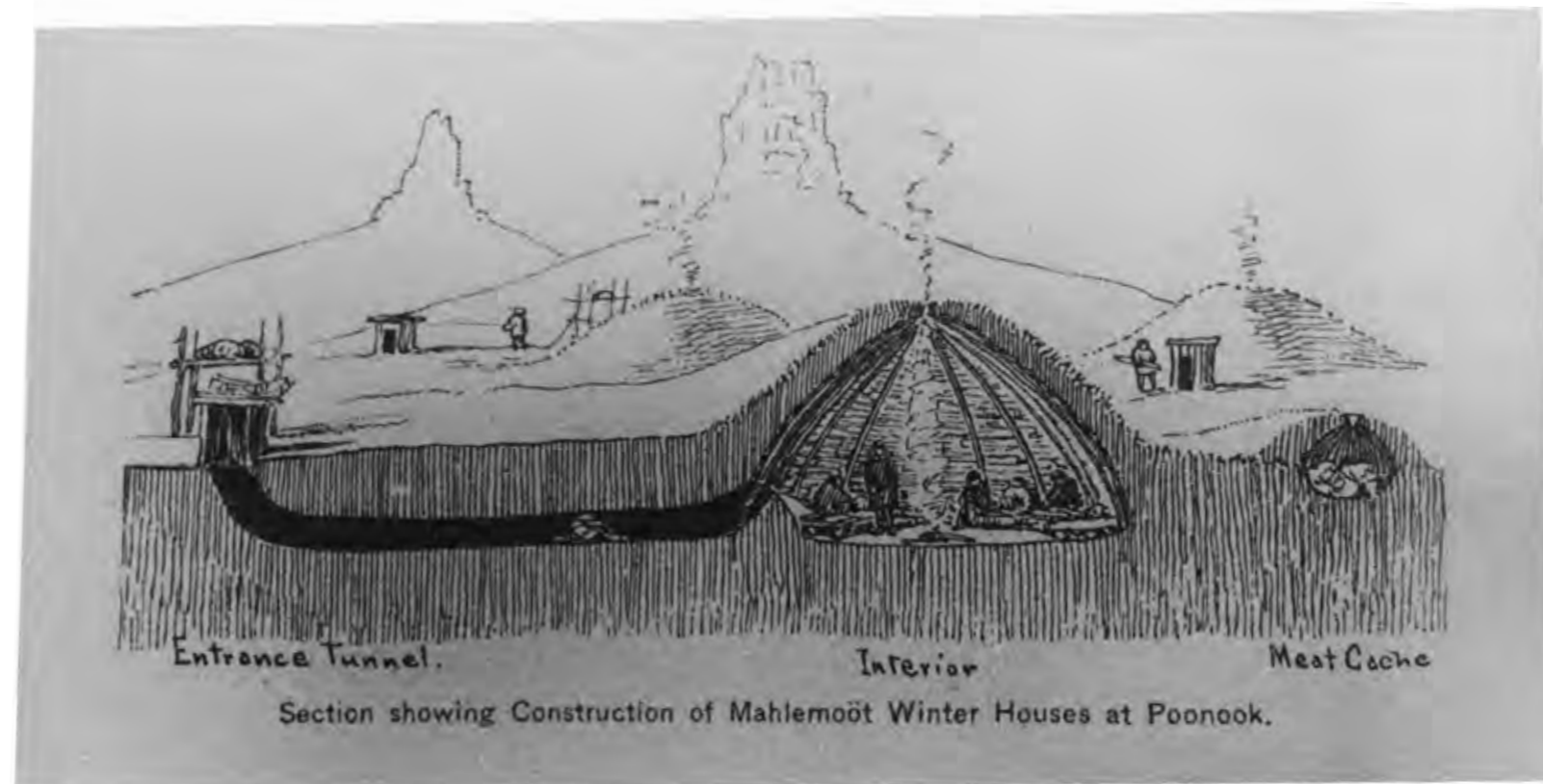










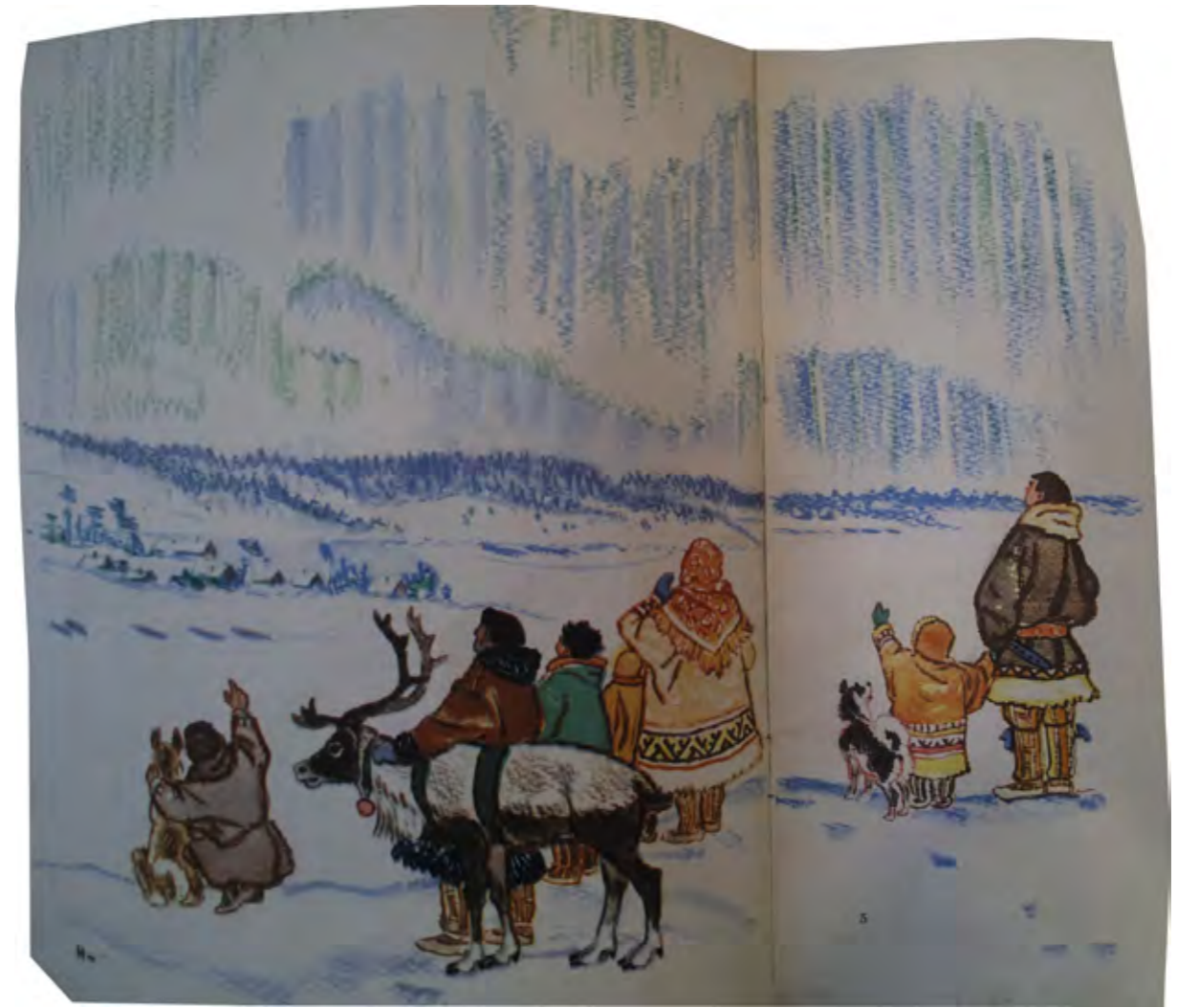












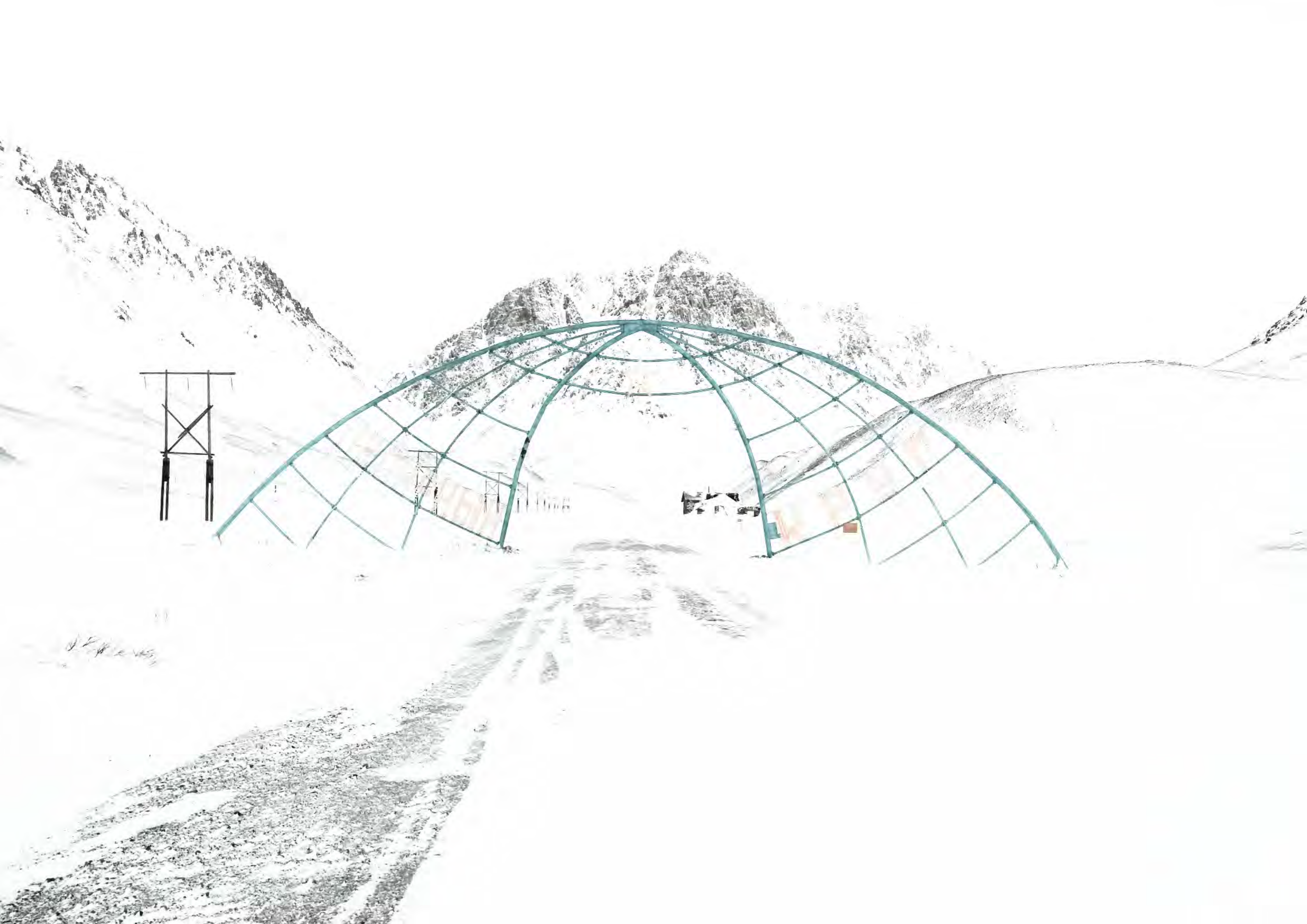














0033
СЕРПЕНТ
ИПТ
СМ 2006







